



THE UPTON - Colonial


359 AMELIA CIRCLE, SOUTH LYON, MI | 2,762 SF | HOMESITE #36


INCLUDED FEATURES:

- ◆ Built-In Bench with Cubbies
- ◆ Alarm System & 1yr. Free Monitoring
- ◆ Walk-in Kitchen Pantry
- ◆ Standing Shower at Powder Room
- ◆ 4 Ft. Family Room Extension
- ◆ Stainless Steel Appliances
- ◆ 42" Maple Kitchen Cabinets
- ◆ Granite Countertops Throughout
- ◆ Second Floor Laundry Room
- ◆ Hardwood Floors In Common Areas
- ◆ 9' First Floor Ceiling Height
- ◆ Stained Railing and Painted Spindles
- ◆ Two Story Foyer
- ◆ 8' Tall Carriage Style Garage Door
- ◆ Pocket Office with Window
- ◆ Expanded Family Room
- ◆ 12 Month Builder Warranty
- ◆ Bonus Second Floor Loft
- ◆ 10 Yr. Basement Warranty
- ◆ Tremco Waterproofing System
- ◆ Three Car Side Entry Garage


FOR MORE INFORMATION PLEASE CONTACT:

 FE MYLES
SALES MANAGER

 Fe.Myles@Singhmail.com

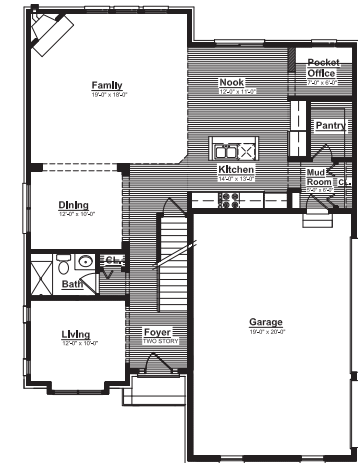
 248.979.8695

 111 Singh BLVD. South Lyon, MI

 MON, TUES, FRI: BY APPT. ONLY
SAT - SUN: NOON - 6P.M.

CHARLESTON PARK

First Floor



Second Floor

