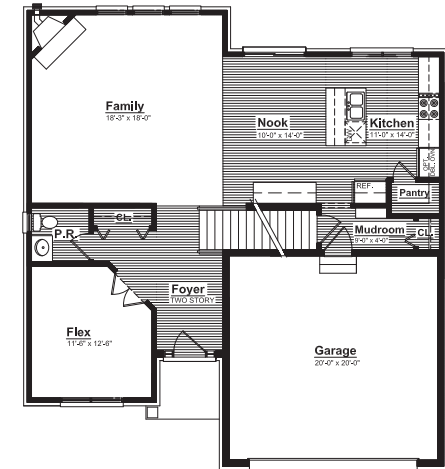


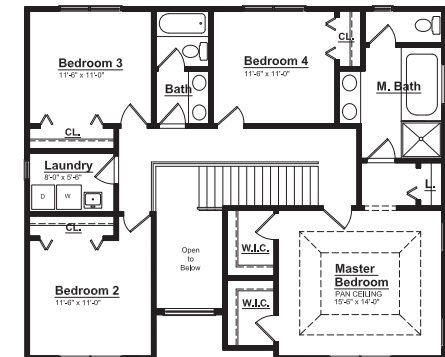


CHARLESTON PARK

First Floor



Second Floor



THE WESTFORD - Colonial

667 ALLEGHENY DR., SOUTH LYON, MI | 2,300 SF | HOMESITE #19

INCLUDED FEATURES:

- ◆ Social Island Configuration
- ◆ Alarm System & 1yr. Free Monitoring
- ◆ Walk-in Kitchen Pantry
- ◆ Stainless Steel Appliances
- ◆ 42" Maple Kitchen Cabinets
- ◆ Granite Countertops Throughout
- ◆ Second Floor Laundry Room
- ◆ Hardwood Floors In Common Areas
- ◆ Additional Windows throughout
- ◆ Glass French Doors at Flex Room
- ◆ 9' First Floor Ceiling Height
- ◆ Stained Railing and Painted Spindles
- ◆ Two Story Foyer
- ◆ 8' Tall Carriage Style Garage Door
- ◆ Expanded Family Room
- ◆ 12 Month Builder Warranty
- ◆ 10 Yr. Basement Warranty
- ◆ Tremco Waterproofing System

FOR MORE INFORMATION PLEASE CONTACT:



FE MYLES
SALES MANAGER



Fe.Myles@Singhmail.com



248.979.8695



111 Singh BLVD. South Lyon, MI



MON, TUES, FRI: BY APPT. ONLY
SAT - SUN: NOON - 6P.M.

