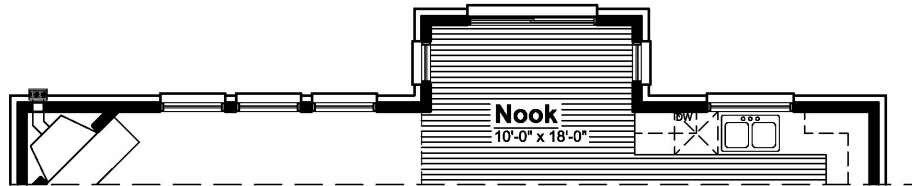
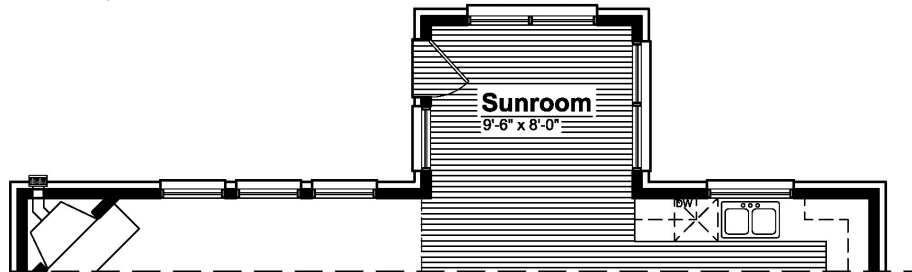


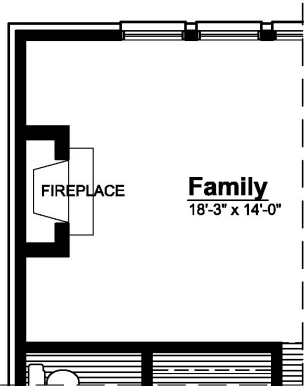
**4 Ft. Family Room Extension**  
Adds 80 Sq. Ft.



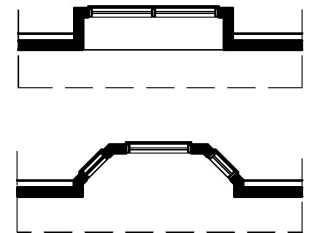
**4 Ft. Nook Extension**  
Adds 44 Sq. Ft.



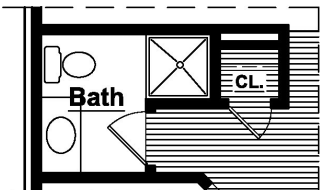
**Sunroom Addition**  
Adds 96 Sq. Ft.



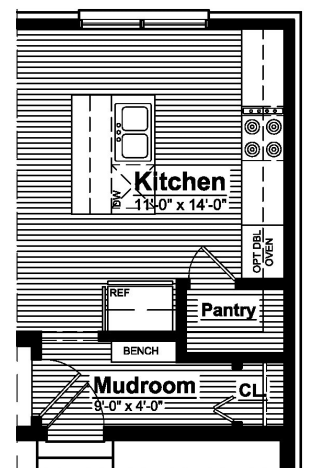
**Center Fireplace**  
ILO Corner Fireplace



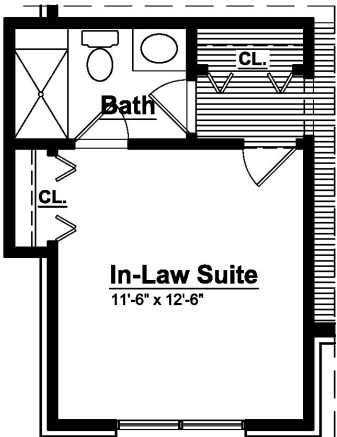
**Box-out / Bay Window**  
Add to Flex Room



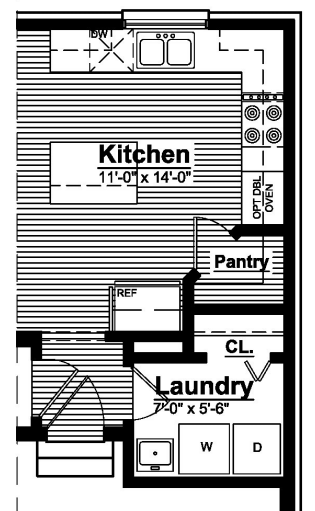
**Shower at Powder Rm**  
3 Ft. x 3 Ft. Shower



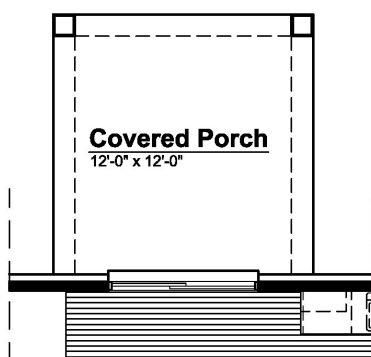
**Social Kitchen Island**  
5 Ft. 6 In. x 4 Ft. Island



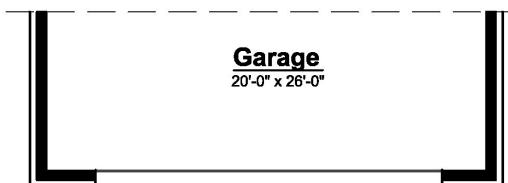
**In-Law Suite at Living**  
Adds 20 Sq. Ft.



**First Floor Laundry Room**  
Adds 15 Sq. Ft.



**Rear Covered Porch**  
145 Sq. Ft. Total



**6 Ft. Garage Extension**  
Front Entry Garage Shown

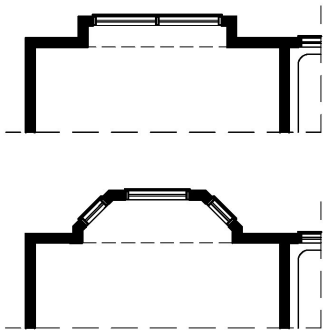
# WESTFORD FIRST FLOOR PLAN

**2,220 SQ. FT.**

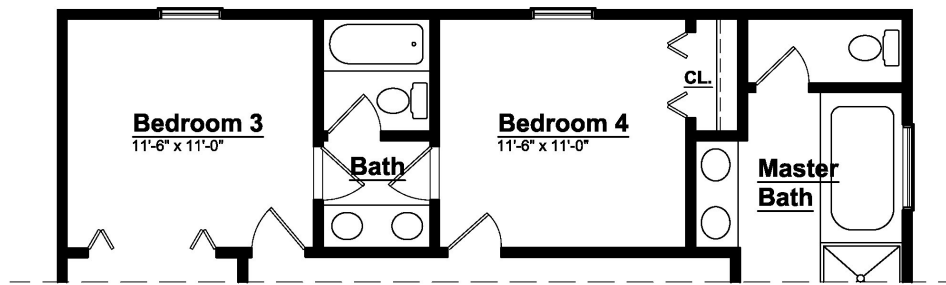
Colonial | 4 - 5 Bedrooms | 2.5 - 4 Bathroom | 2 - 3 Car Garage

These are preliminary floor plans and are subject to change without notice. Certain options may be included at some communities. See Sales Consultant for complete list of available upgrades, details, and pricing. Striped area of first floor indicates wood flooring. Home size is approximate and may vary. Plans updated as of February 2023.

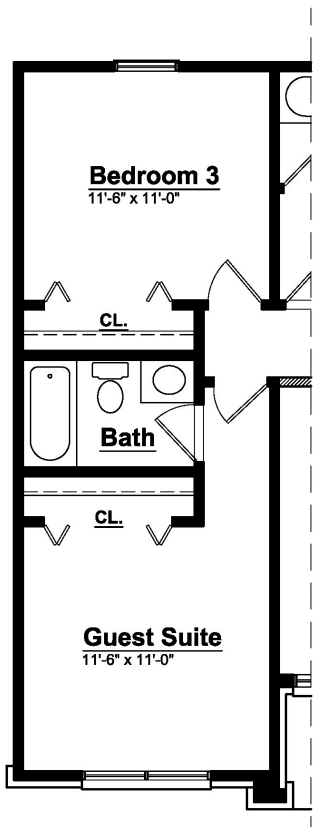
These floor plans are an artist's conception only, may vary in construction, and are subject to change with out notice. We reserve the right to make changes to plans, specifications, and materials. Room sizes, window locations, brick placement, and porches may vary depending on the elevation, upgrades selected and community. 2023 Singh Homes, LLC.



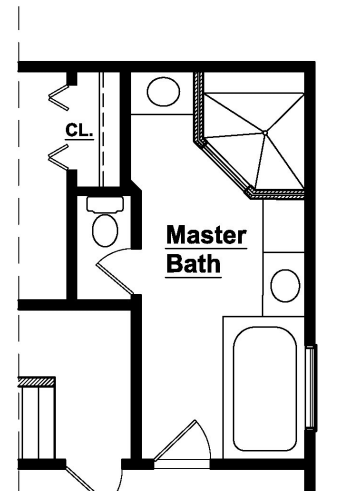
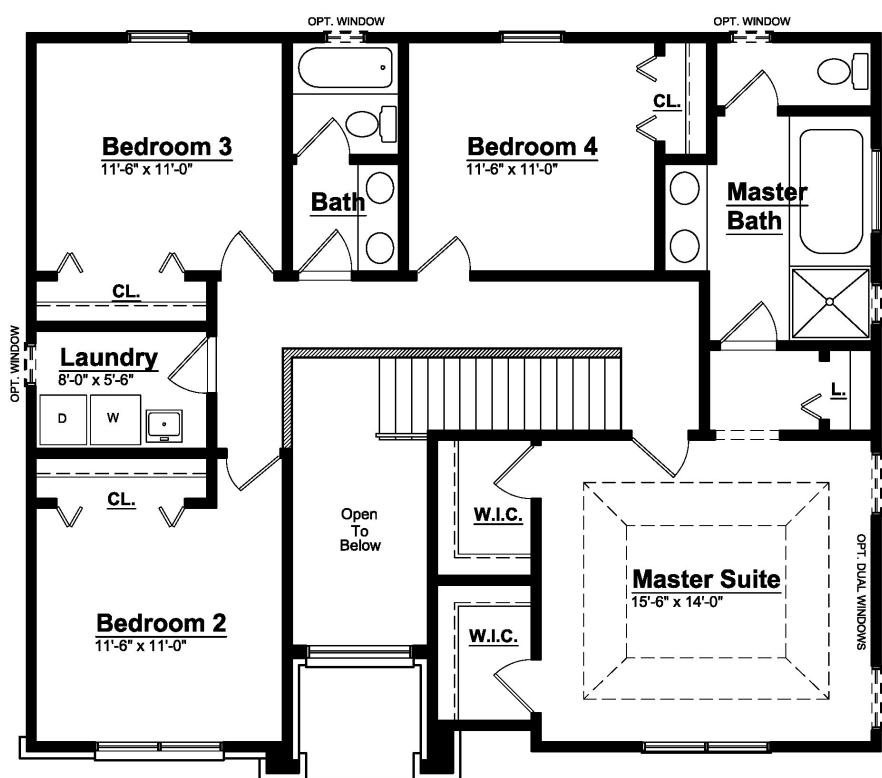
**Box-out /Bay Window**  
Add to Front/Rear/Side of Bedroom



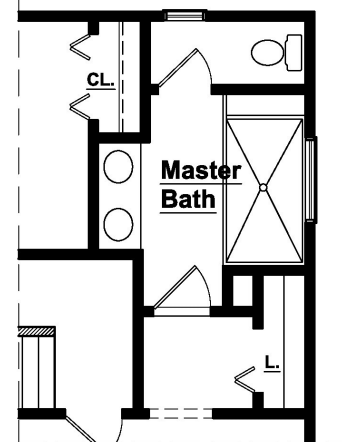
**Jack & Jill Bathroom**  
Includes Guest Suite at Bedroom 2



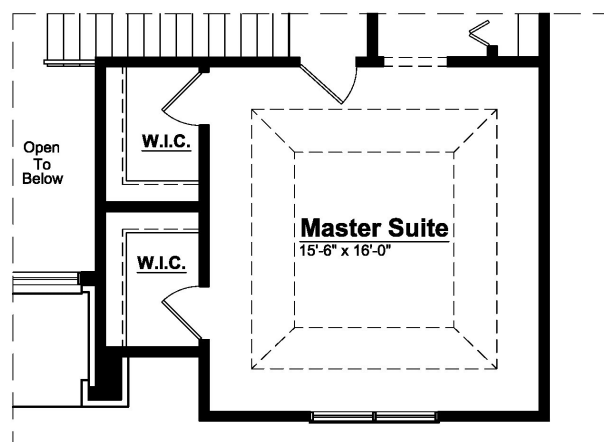
**Guest Suite**  
Includes Full Bathroom



**Elite Master Suite**  
Includes Luxury Shower and Dress Area



**Enlarged Master Shower**  
ILO Built-in Soaking Tub



**2 Ft. Master Suite Extension**  
Adds 32 Sq. Ft.

# WESTFORD SECOND FLOOR PLAN

**2,220 SQ. FT.**

Colonial | 4 - 5 Bedrooms | 2.5 - 4 Bathroom | 2 - 3 Car Garage

These are preliminary floor plans and are subject to change without notice. Certain options may be included at some communities. See Sales Consultant for complete list of available upgrades, details, and pricing. Striped area of first floor indicates wood flooring. Home size is approximate and may vary. Plans updated as of February 2023.

These floor plans are an artist's conception only, may vary in construction, and are subject to change with out notice. We reserve the right to make changes to plans, specifications, and materials. Room sizes, window locations, brick placement, and porches may vary depending on the elevation, upgrades selected and community. 2023 Singh Homes, LLC.