

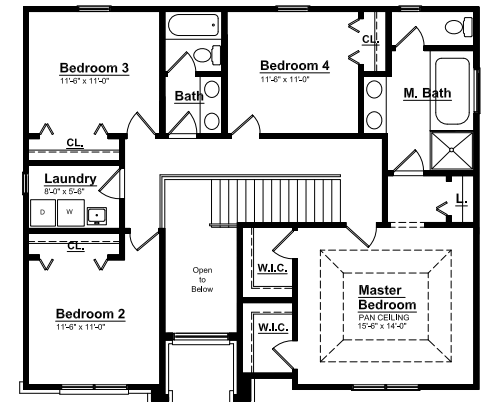


## CHARLESTON PARK

First Floor



Second Floor



### THE WESTFORD - Colonial


655 ALLEGHENY DR., SOUTH LYON, MI 48178 | 2,300 SF | HOMESITE #16


#### INCLUDED FEATURES:

- ◆ Social Island Configuration
- ◆ Alarm System & 1yr. Free Monitoring
- ◆ Walk-in Kitchen Pantry
- ◆ Glass French Doors at Flex Room
- ◆ Expanded Family Room
- ◆ Stainless Steel Appliances
- ◆ 42" Maple Kitchen Cabinets
- ◆ Granite Countertops Throughout
- ◆ Second Floor Laundry Room
- ◆ Hardwood Floors In Common Areas
- ◆ 9' First Floor Ceiling Height
- ◆ Stained Railing and Painted Spindles
- ◆ Two Story Foyer
- ◆ 8' Tall Carriage Style Garage Door
- ◆ 12 Month Builder Warranty
- ◆ 10 Yr. Basement Warranty
- ◆ Tremco Waterproofing System


FOR MORE INFORMATION  
PLEASE CONTACT:

 FE MYLES  
SALES MANAGER

 Fe.Myles@Singhmail.com

 248.979.8695

 111 Singh BLVD. South Lyon, MI

 MON, TUES, FRI: BY APPT. ONLY  
SAT - SUN: NOON - 6P.M.

