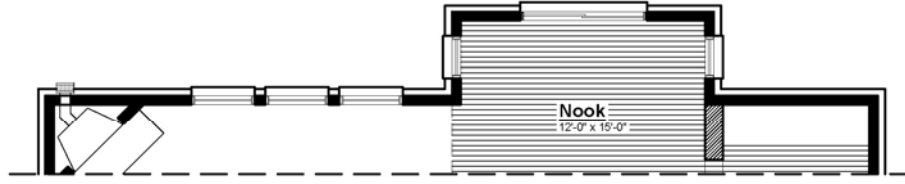
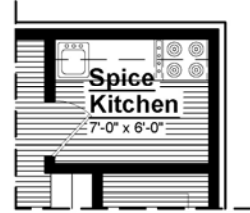




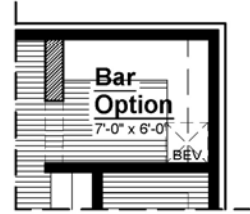
4 Ft. Family Room Extension
Adds 80 Sq. Ft.



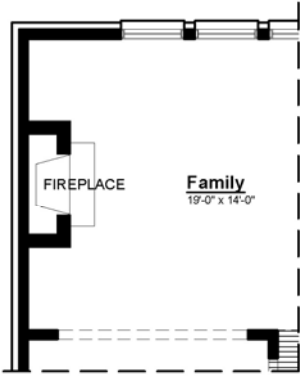
4 Ft. Nook Extension
Adds 50 Sq. Ft.



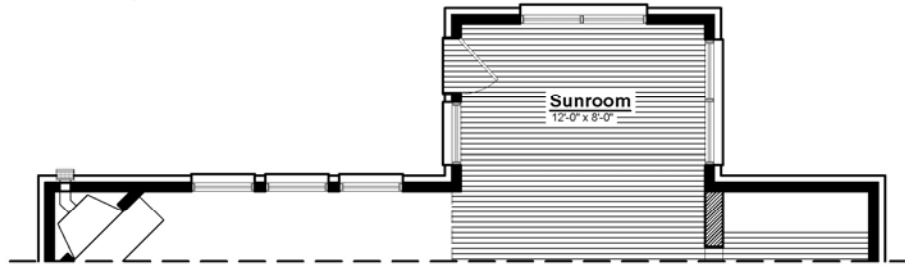
Spice Kitchen
ILO of Pocket Office



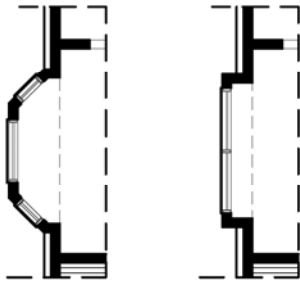
Bar Option
ILO of Pocket Office



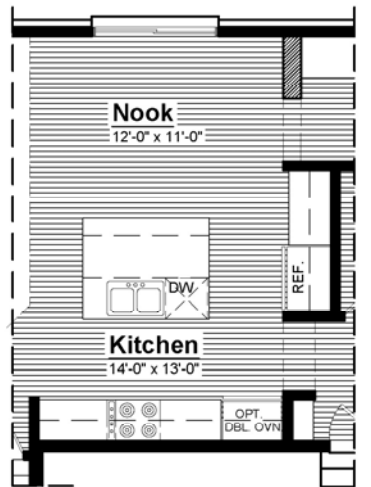
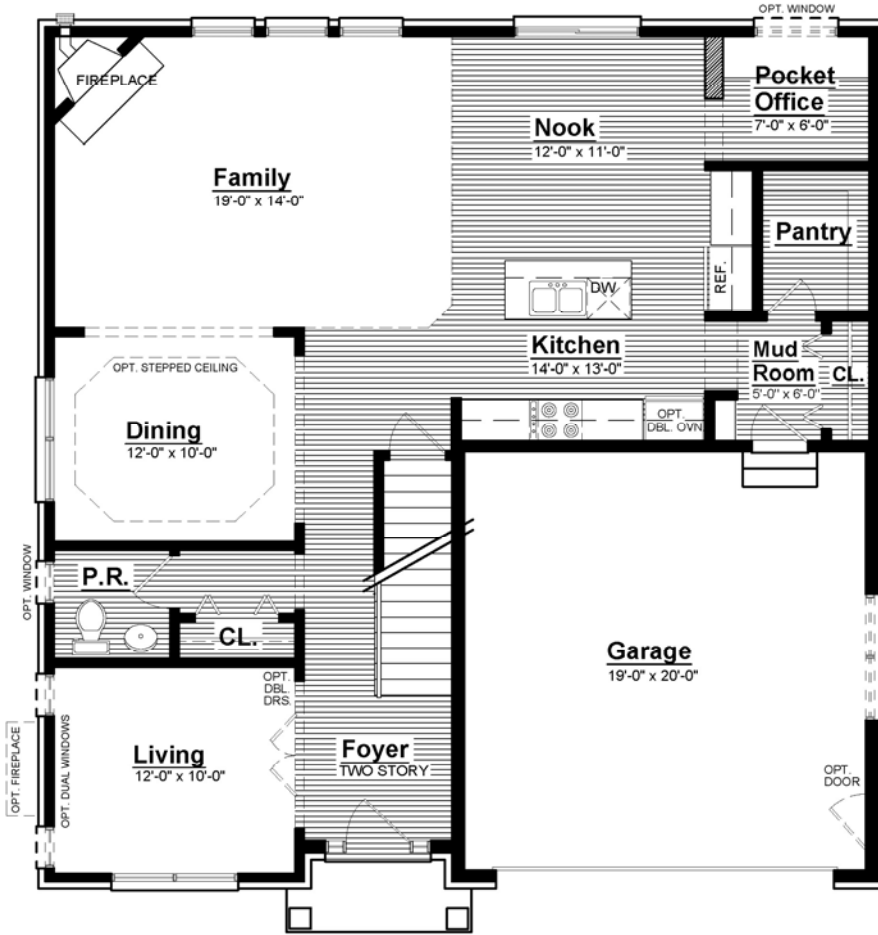
Center Fireplace
ILO Corner Fireplace



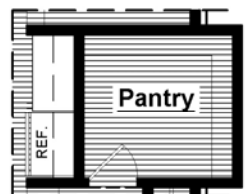
Sunroom Addition
Adds 100 Sq. Ft.



Box-out / Bay Window
Add to Side Dining/ Front of Living



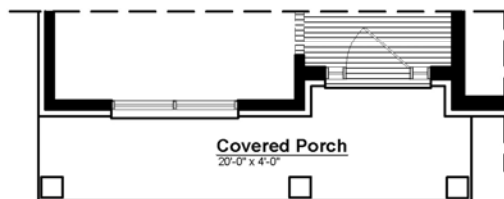
2 Ft. Island Extension
6 Ft. x 5 Ft.



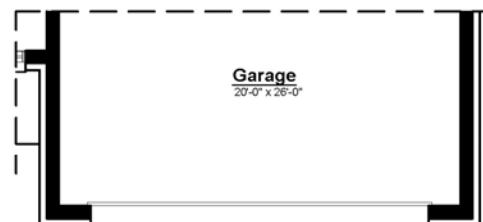
2 Ft. Pantry Extension
Adds 12 Sq. Ft.



In-Law Suite at Living
Adds 20 Sq. Ft.



Front Covered Porch
4 Ft. x 20 Ft.



6 Ft. Garage Extension
20 Ft. x 26 Ft.



Drop Zone
24" Cabinet

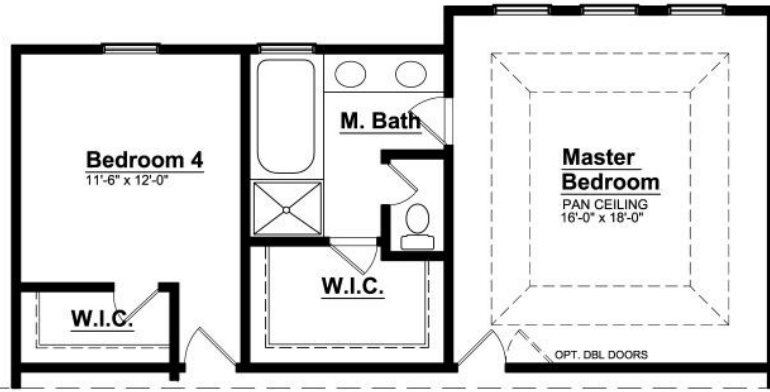
UPTON FIRST FLOOR PLAN

2,680 SQ. FT.

Colonial | 4 - 6 Bedrooms | 2.5 - 4 Bathroom | 2 - 3 Car Garage

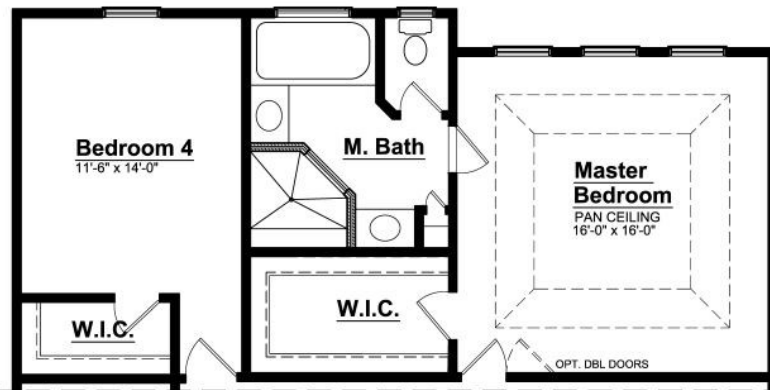
These are preliminary floor plans and are subject to change without notice. Certain options may be included at some communities. See Sales Consultant for complete list of available upgrades, details, and pricing. Striped area of first floor indicates wood flooring. Home size is approximate and may vary. Plans updated as of February 2022.

These floor plans are an artist's conception only, may vary in construction, and are subject to change with out notice. We reserve the right to make changes to plans, specifications, and materials. Room sizes, window locations, brick placement, and porches may vary depending on the elevation, upgrades selected and community. 2022 Singh Homes, LLC.



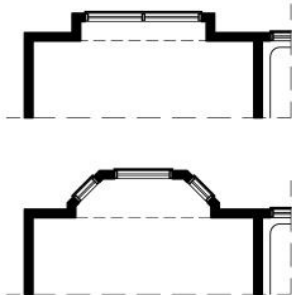
2 Ft. Master Suite Extension

Adds 35 Sq. Ft.



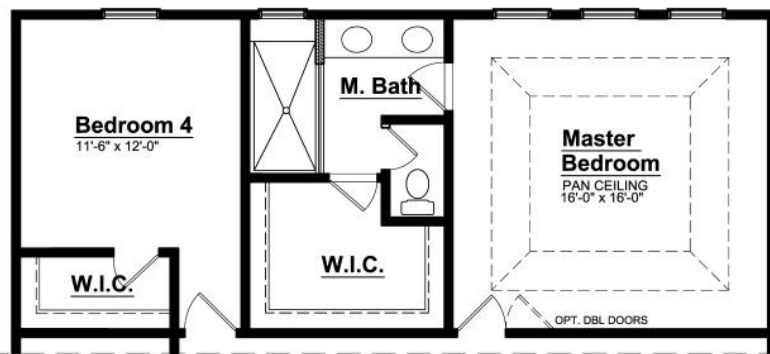
Elite Master Suite and Bedroom 4 Extension

Adds 44 Sq. Ft.



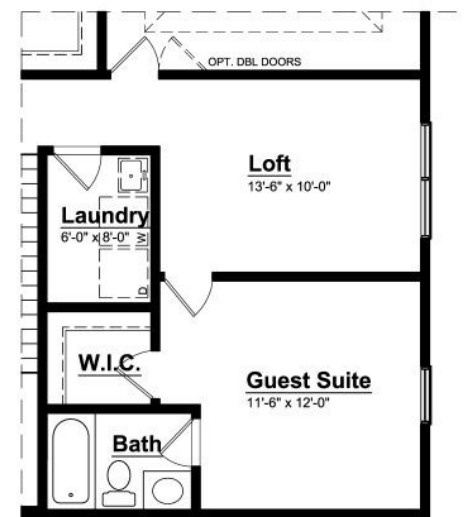
Box-out / Bay Window

Add to Front/Rear/Side of Loft/Bedroom



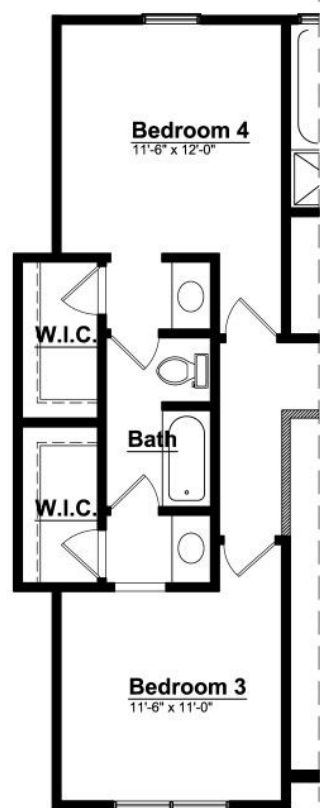
Enlarged Master Shower

ILO Built-in Soaking Tub



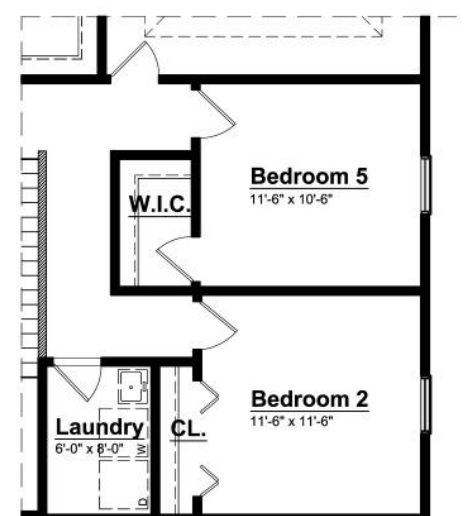
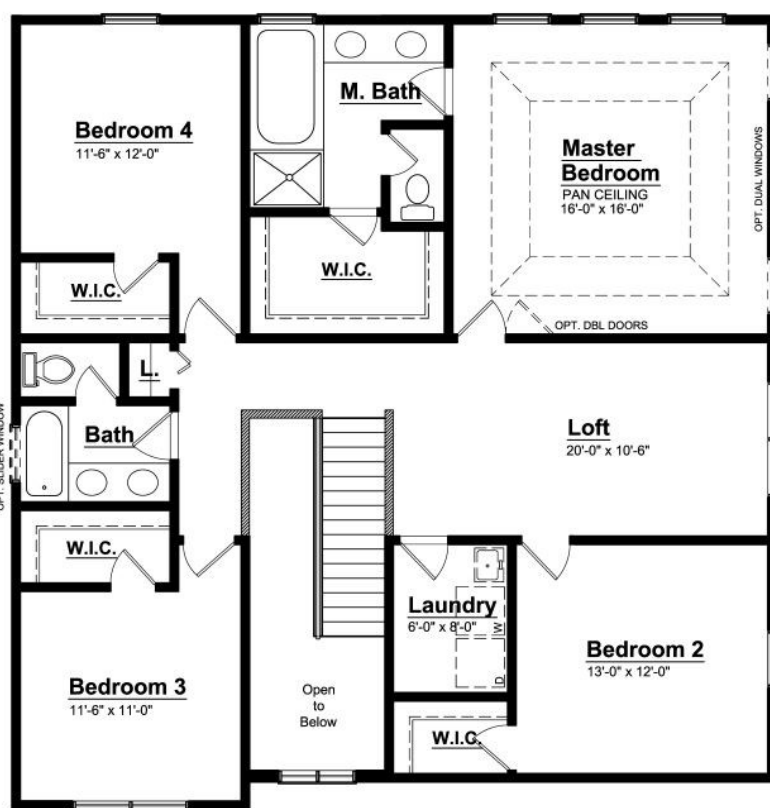
Guest Suite

Includes Full Bathroom



Jack & Jill Bathroom

Includes Guest Suite | Adds 35 Sf.



5th Bedroom

ILO Loft

UPTON SECOND FLOOR PLAN

2,680 SQ. FT.

Colonial | 4 - 6 Bedrooms | 2.5 - 4 Bathroom | 2 - 3 Car Garage

These are preliminary floor plans and are subject to change without notice. Certain options may be included at some communities. See Sales Consultant for complete list of available upgrades, details, and pricing. Striped area of first floor indicates wood flooring. Home size is approximate and may vary. Plans updated as of February 2022.

These floor plans are an artist's conception only, may vary in construction, and are subject to change with out notice. We reserve the right to make changes to plans, specifications, and materials. Room sizes, window locations, brick placement, and porches may vary depending on the elevation, upgrades selected and community. 2022 Singh Homes, LLC.