

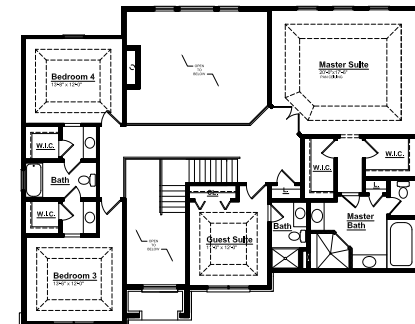


WESTCHESTER

First Floor



Second Floor



THE HELMSLEY - Colonial

49475 ANNANDALE DR. CANTON, MI 48187 | 3,637 SF | HOMESITE #25

INCLUDED FEATURES:

- ◆ Expanded Nook and Kitchen with Social Island
- ◆ Gourmet Kitchen Layout
- ◆ Wrap Around Butler's Pantry
- ◆ Convenient Corner Kitchen Pantry
- ◆ Stainless Steel Appliances
- ◆ 42" Maple Kitchen Cabinets
- ◆ Laundry Rm with Window off Mudroom
- ◆ Granite Countertops Throughout
- ◆ Quartz Countertops in Master Bathroom
- ◆ Stained Railing & Painted Spindles
- ◆ First Floor Master Suite with Pan Ceiling
- ◆ Pan Ceiling at all Secondary Windows
- ◆ Expanded Master Suite with Double Door Entry
- ◆ Elite Master Suite with Luxury Shower
- ◆ Hardwood Floors in all Common Areas
- ◆ Jack and Jill bathroom layout with window
- ◆ Guest Suite including Full Bathroom
- ◆ 9' First Floor Ceiling Height
- ◆ Two Story Foyer and Family Room Ceilings
- ◆ 8' tall Carriage style Garage Door
- ◆ 12 Month Builder Warranty
- ◆ 10 yr. Basement Warranty
- ◆ Tremco Waterproofing System

FOR MORE INFORMATION PLEASE CONTACT:



JYOTI BANIPAL
SALES MANAGER



Jyoti.Banipal@singhmail.com



248.516.9934



49476 Annandale Dr. Canton, MI



Mon, Tues, Fri: Noon - 5p.m.
Sat - Sun: Noon - 6p.m.