



WINDSOR - Colonial

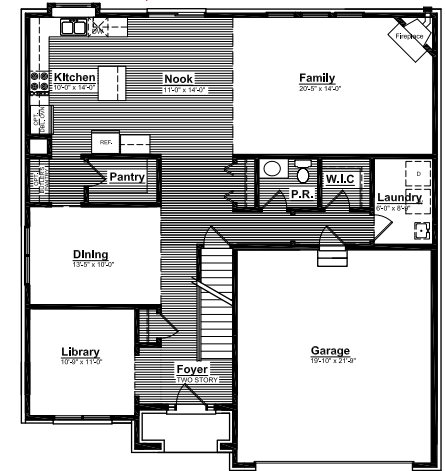
2,955 SQUARE FEET | 4 BEDROOM | 2.5 BATH | 3 ELEVATIONS

INTERIOR FEATURES:

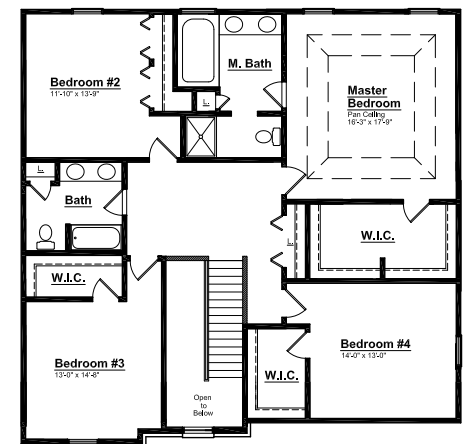
- Spacious Kitchen with Box-Out Window and Granite Ledge
- Convenient Walk-In Kitchen Pantry adjacent to Optional Butler's Pantry
- Nook with 8' Sliding Glass Door
- Walk-In Closet at Mud Hall
- Hardwood in all Common Areas
- Corner Fireplace with Mantle and Marble Surround
- Two Story Foyer with Grand Chandelier Window
- Full size Laundry Room off Mud Hall
- Elegant Stairwell at Foyer, capped with Stained Wood Railing and Painted Spindles
- Bi-Fold Closets for Additional Storage on each floor
- Walk-In Closets at Secondary Bedrooms
- Large Master Suite with generous shared Walk-In Closet
- Open Master Bathroom with Linen Closet, Luxury Shower, and Built-In Soaking tub
- 2 Panel Front Door (to match Interior Doors), with Sidelights and Transom

FOLLGATE WOODS

First Floor



Second Floor



WINDSOR - *Elevations*

Windsor G



- ◆ Sliced-Hip Roof Line
- ◆ Shake Siding and Accent 12" Vinyl Shutters
- ◆ Full Covered Front Porch with Craftsman Style Stone Based Columns
- ◆ Stone above Front Porch with Arched Grand Chandelier Window

Windsor H



- ◆ Two Story Front Porch with Grand Chandelier Window
- ◆ Vertical Brick Detail with Limestone at each Gable
- ◆ Limestone Keystones above Windows and Garage Doors
- ◆ Box-Out Window at Library with Standing Seam Metal Roofing

Windsor I



- ◆ 18" Vinyl Shutters and Accent Dormer
- ◆ Bay Window at Library with Standing Seam Metal Roofing
- ◆ Shed Roof with Decorative Brackets over Garage Door
- ◆ Arched Two Story Stone Front Porch with Grand Chandelier Window