



BARTELLE - Colonial

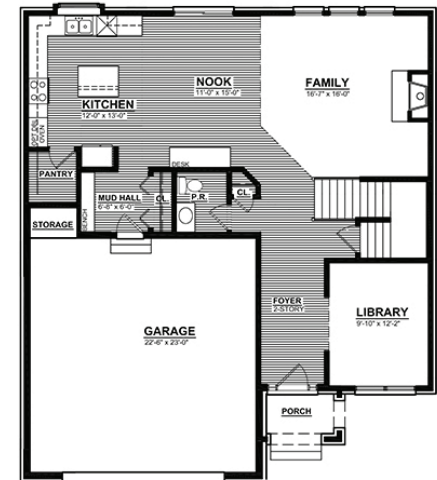
2,640 SQUARE FEET | 4 BEDROOM | 2.5 BATH | 3 ELEVATIONS

INTERIOR FEATURES:

- ◆ Open Kitchen with Box Out Window and Granite Ledge
- ◆ Oversized Corner Walk-in Pantry
- ◆ Storage Space Inside Garage
- ◆ Nook with 8' Sliding Glass Door
- ◆ Mudroom with Bench, Cubbies, and Closet Storage
- ◆ Desk/Drop Zone at Nook with Available Butler's Pantry
- ◆ Central Fireplace with Mantle and Marble Surround
- ◆ U-Shaped stairwell with Landing, Capped with Stained Wood Railing and Painted Spindles
- ◆ Optional Third Car Garage
- ◆ Two Story Foyer with Grand Chandelier Window
- ◆ Second Story Full size Laundry Room
- ◆ Hallway Closets for extra Storage on Each Floor
- ◆ Large Master Suite overlooking the Two Story Foyer
- ◆ Shared Walk-In Closet beyond Master Bedroom
- ◆ Walk-thru Master Bathroom with Commode, Linen Closet, Luxury Shower, and Built-In Soaking Tub
- ◆ 2 Panel Front Door (to match Interior Doors), with Sidelights and Transom

CHARLESTON PARK

First Floor



Second Floor



BARTELLE - *Elevations*

Bartelle A



- ◆ Stone Front Porch with Stone Column
- ◆ Limestone Keystones above Windows and Garage Doors
- ◆ Shake Siding and 18" Vinyl Shutters

Bartelle B



- ◆ Stone at Foyer with Grand Chandelier Window
- ◆ Limestone Keystones above Windows and Garage Doors
- ◆ Shake Siding and Accent Brick Detail
- ◆ Full Covered Front Porch with Craftsman Style Stone Columns

Bartelle C



- ◆ Limestone Keystones above Windows and Garage Doors
- ◆ Shake Siding and Accent Brick Detail
- ◆ 2 Story Turret with Geometric Roof
- ◆ Stone Two Story Front Porch with Grand Chandelier Window
- ◆ Sliced Hip Roof Line