

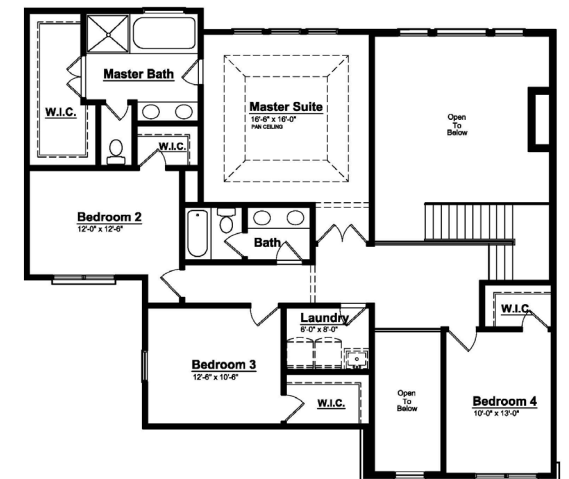


BOLINGBROOKE SINGH

First Floor



Second Floor



GRAYSON - Colonial

2,730 SQUARE FEET | 4 BEDROOM | 2.5 BATH | 6 ELEVATIONS

INTERIOR FEATURES:

- ◆ Expanded Kitchen with Box-out Window over Sink
- ◆ Extra Large Walk-in Kitchen Pantry
- ◆ Nook with 8' Sliding Glass Door
- ◆ Gourmet Kitchen Layout
- ◆ Pocket Office open to Nook and Kitchen
- ◆ Spacious Second Floor Laundry Room
- ◆ Hardwood in all Common Areas
- ◆ Two Panel Front Door with Sidelights and Transom
- ◆ Decorative Niche at Foyer
- ◆ Impressive Stairwell open to Family Room
- ◆ Mudroom with Bench and Cubbies
- ◆ Built in Columns at Flex Room
- ◆ Two Story Family Room
- ◆ Center Fireplace with Mantle and Marble Surround
- ◆ Two Story Foyer with Grand Chandelier Window
- ◆ Railing and Spindles Throughout
- ◆ Walk-in Closets at all Secondary Bedrooms
- ◆ Grand Shared Master Closet
- ◆ Large Master Bedroom with Atrium Entry
- ◆ Open Master Bathroom with Spa Tub and Luxury Shower
- ◆ Pan Ceiling At Master Bedroom

GRAYSON - Elevations

Grayson A



- ◆ Full Covered Front Porch
- ◆ Stone at Front Porch and Garage
- ◆ Craftsman Style Columns with Stone Base
- ◆ Limestone Keystones and Accent Vertical Brick Details

Grayson B



- ◆ Stone Two Story Front Porch with Masonry Corbels
- ◆ Stone Wainscoting and Decorative Gable Brackets
- ◆ Limestone Surrounds, Sills, and Keystones
- ◆ Transom Windows at Flex Room and Garage

Grayson C



- ◆ Stone Two Story Front Porch with Grand Chandelier Window
- ◆ Bay Window at Flex Room and Stone on Garage Wall
- ◆ Decorative Roof Dormers and Accent Vertical Brick Details
- ◆ Arched Transom Window and Stone at Garage

Grayson D



- ◆ Stone Two Story Front Porch with Grand Chandelier Window
- ◆ Box-out Window with Metal Roofing at Flex Room
- ◆ Decorative Brackets over Front Porch and Stone at Garage
- ◆ Eyebrow Detail with Arched Transom at Bedroom

Grayson E



- ◆ Stone Two Story Front Porch with Grand Chandelier Window
- ◆ Two Story Turret at Flex Room and Bedroom Above
- ◆ Arched Transom Window and Stone at Garage
- ◆ Accent Vertical Brick Details and Limestone Keystones

Grayson F



- ◆ Craftsman Style Architecture with Stone Wainscoting across Façade
- ◆ Board and Batten Siding and Shutters
- ◆ Full Covered Front Porch
- ◆ Decorative Gable Brackets and Shake Siding