

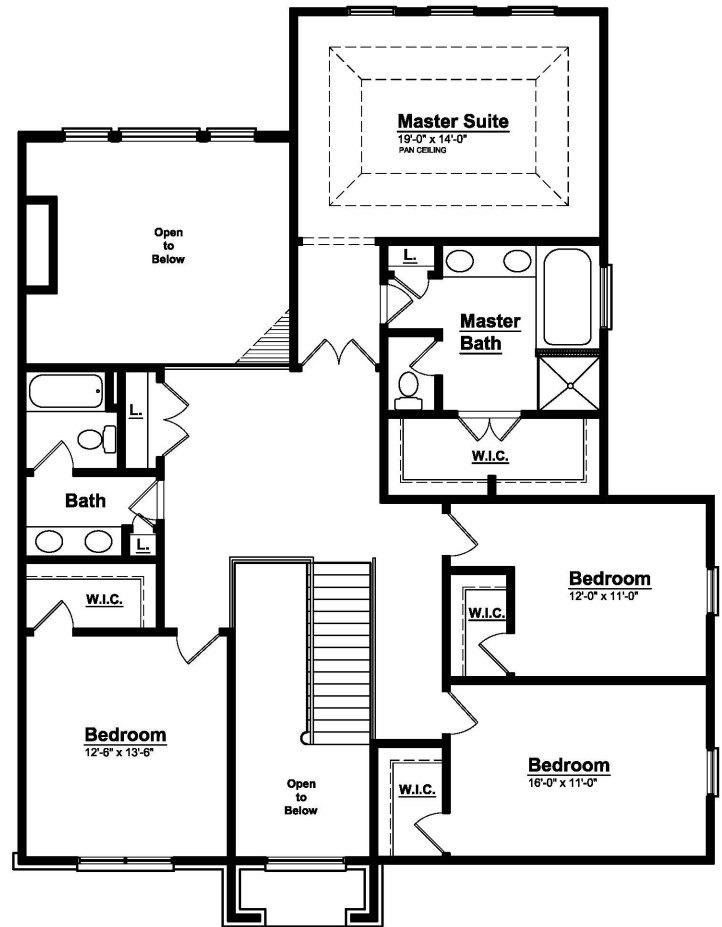
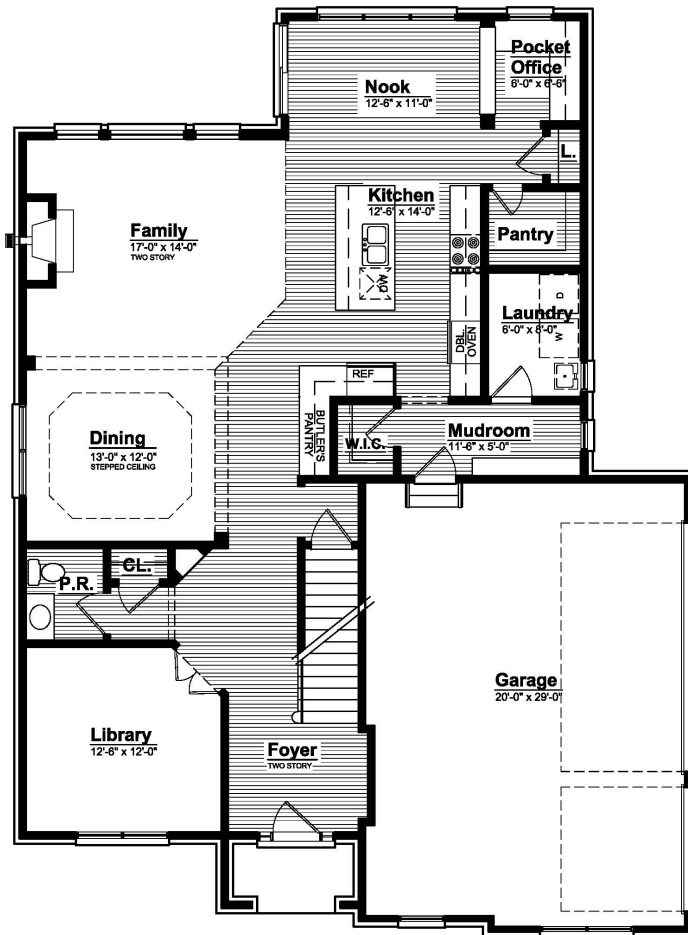
# BOLINGBROOKE | IRVING (Colonial)

2,997 to 3,130 Square Feet

4 Bedroom

2.5 Bath

6 Elevations



## INTERIOR FEATURES | IRVING

- Stylish Kitchen with Social Island Layout
- Gourmet Kitchen Layout
- Roomy Walk in Kitchen Pantry
- Pocket Office open to Nook and Kitchen
- Nook with 8' Sliding Glass Door
- Spacious First Floor Laundry Room with Window
- Hardwood in all Common Areas
- Decorative Niche at Foyer
- Elegant Stairwell in Foyer
- Stepped Ceiling in Dining Room Open to Main Floor
- Wrap-around Butler's Pantry Adjacent to Kitchen and Dining Room
- Mudroom with Window and Bench with Cubbies
- Three Car Side Entry Garage
- Angled Entry with double Doors to Library off Foyer
- Two Panel Front Door with Sidelights and Transom
- Two Story Foyer with Grand Chandelier Window
- Two Story Family Room
- Central Fireplace with Mantle and Marble Surround
- Railing and Spindles Throughout
- Walk-in Closets at all Secondary Bedrooms
- Shared Grand Master Closet with Double Door
- Large Master Bedroom with Atrium Entry
- Open Master Bathroom with Spa Tub and Luxury Shower
- Pan Ceiling At Master Bedroom