

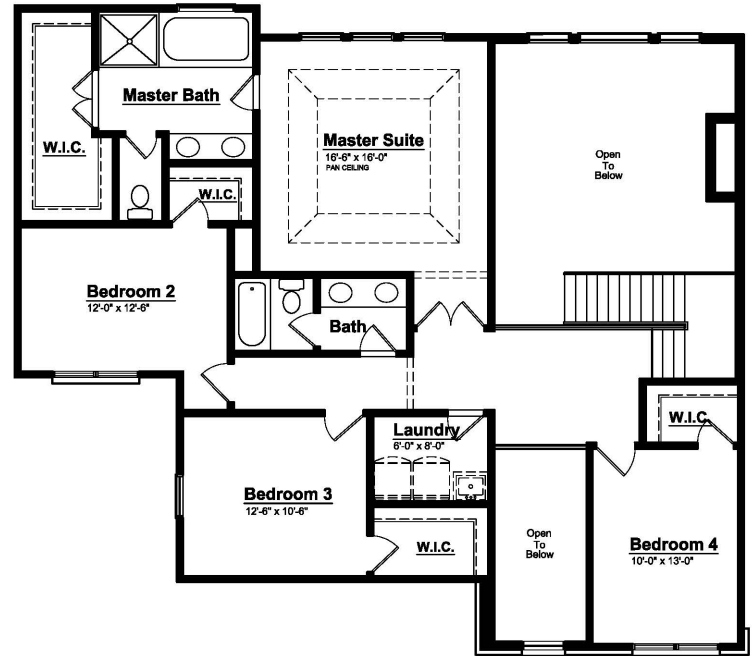
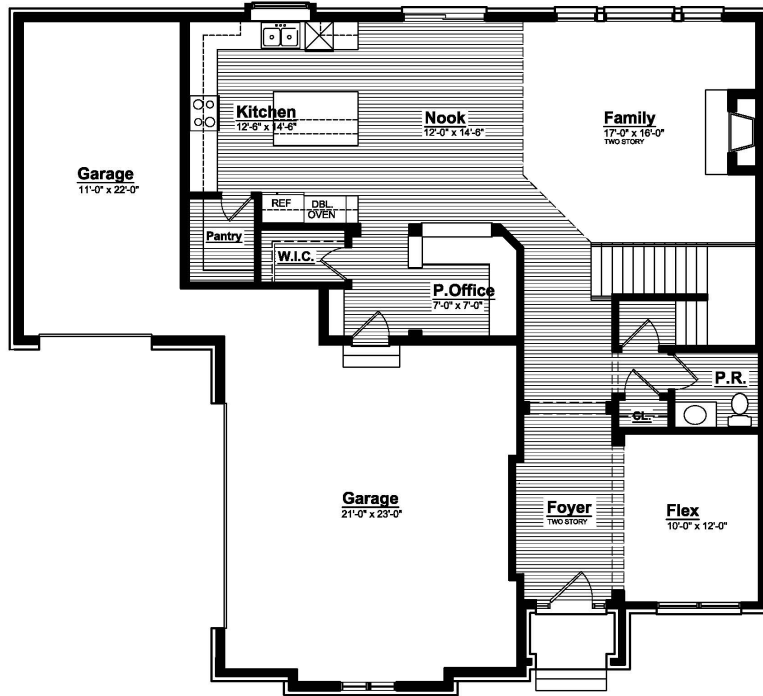
BOLINGBROOKE | GRAYSON (Colonial)

2,730 to 2,800 Square Feet

4 Bedroom

2.5 Bath

6 Elevations



INTERIOR FEATURES | GRAYSON

- Expanded Kitchen with Box-out Window over Sink
- Extra Large Walk-in Kitchen Pantry
- Nook with 8' Sliding Glass Door
- Gourmet Kitchen Layout
- Pocket Office open to Nook and Kitchen
- Spacious Second Floor Laundry Room
- Hardwood in all Common Areas
- Two Panel Front Door with Sidelights and Transom
- Decorative Niche at Foyer
- Impressive Stairwell open to Family Room
- Mudroom with Bench and Cubbies
- Three Car Courtyard Entry Garage
- Built in Columns at Flex Room
- Two Story Family Room
- Center Fireplace with Mantle and Marble Surround
- Two Story Foyer with Grand Chandelier Window
- Railing and Spindles Throughout
- Walk-in Closets at all Secondary Bedrooms
- Grand Shared Master Closet
- Large Master Bedroom with Atrium Entry
- Open Master Bathroom with Spa Tub and Luxury Shower
- Pan Ceiling At Master Bedroom