



## REMINGTON - Colonial

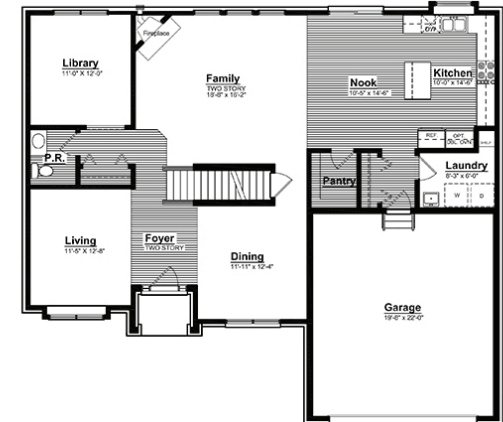
3,019 SQUARE FEET | 4 BEDROOM | 2.5 BATH | 3 ELEVATIONS

### INTERIOR FEATURES:

- Roomy Kitchen with Box-out Window and Granite Ledge
- Convenient Walk-in Kitchen Pantry off nook
- Nook with 8' Sliding Glass Door
- Corner Fireplace with Mantle and Marble Surround
- Central Stairwell Capped with Stained Wood Railing and Painted Spindles
- Hardwood in all Common Areas
- Second Floor Bonus Loft
- Full size Laundry Room with Built-In Storage
- Two Story Foyer with Grand Chandelier Window
- Walk-In Closets at Secondary Bedrooms
- Large Master Suite with oversized Walk-In Closets
- Open Master Bathroom with Commode, Built-In Soaking Tub, and Luxury Shower
- Two Panel Front Door (to match Interior Doors), with Sidelights and Transom
- Additional Closets on each floor for Storage
- Available 5th Bedroom
- Available Two Story Family Room



First Floor



Second Floor



## REMINGTON - *Elevations*

Remington F



- ◆ Box-out Window at Living Room with Standing Seam Metal Roofing
- ◆ Arched Two Story Stone Front Porch with Grand Chandelier Window
- ◆ Shake Siding and Accent Windows

Remington G



- ◆ Shed Roof over Garage Door with Decorative Brackets
- ◆ 18" Vinyl Shutters with Arched Windows
- ◆ Triple wide Window at Dining Room
- ◆ Stone Front Porch open to side with Standing Seam Metal Roofing

Remington H



- ◆ Shed Roof over Garage Door with Decorative Brackets
- ◆ Shake Siding and Accent Dormer
- ◆ Grand Stone Section on Facade
- ◆ 18" Vinyl Board and Batten Shutters