



NANTUCKET - Cape Cod

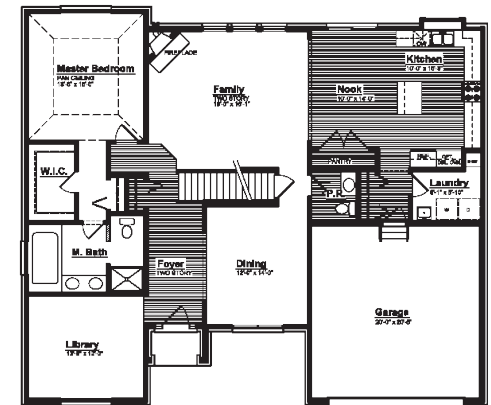
2,791 SQUARE FEET | 4 BEDROOM | 2.5 BATH | 3 ELEVATIONS

INTERIOR FEATURES:

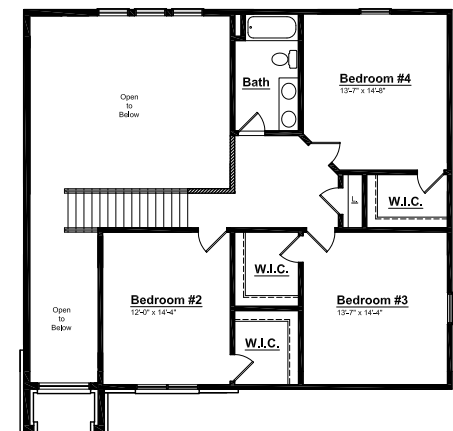
- ◆ Expanded Kitchen with Box-Out Window and Granite Ledge
- ◆ Convenient Kitchen Pantry off Nook with Extended shelves
- ◆ Two Story Foyer with Grand Chandelier Window
- ◆ Nook with 8' Sliding Glass Door
- ◆ Centrally Located Powder Room
- ◆ Hardwood in all Common Areas
- ◆ Full Size Laundry Romo off Mud Hall with storage
- ◆ Corner Fireplace with Mantle and Marble Surround
- ◆ Central Stairwell, Capped with Stained Wood Railing and Painted Spindles
- ◆ Private First Floor Master Suite
- ◆ Large Master Bathroom with Luxury Shower and Built-in Soaking Tub
- ◆ Hallway Closets for Extra Storage on each floor
- ◆ Walk-in Closets at Secondary Bedrooms
- ◆ 2 Panel Front Door (to match Interior doors), with Sidelights and Transom

CHARLESTON PARK

First Floor



Second Floor



NANTUCKET - *Elevations*

Nantucket E



- ◆ Shed Roof with Decorative Brackets over Garage
- ◆ Stone Two Story Front Porch with Wing Wall and Grand Chandelier Window
- ◆ Slice-Hip Roof Style at Large Gables
- ◆ 12" Vinyl Shutters and Shake Siding

Nantucket F



- ◆ Two Story Front Porch with Grand Chandelier Window
- ◆ Large Stone and Shake Siding Sections
- ◆ Limestone Keystones above Windows and Garage Doors

Nantucket G



- ◆ Full Front Porch with Standing Seam Metal Roofing and Craftsman Style Columns
- ◆ Shake Siding and Decorative Brick Detail
- ◆ Stone at Foyer and at Front Porch Craftsman Columns
- ◆ Gable Roof Style with large Accent Dormer
- ◆ 18" Vinyl Shutters and Limestone Header