

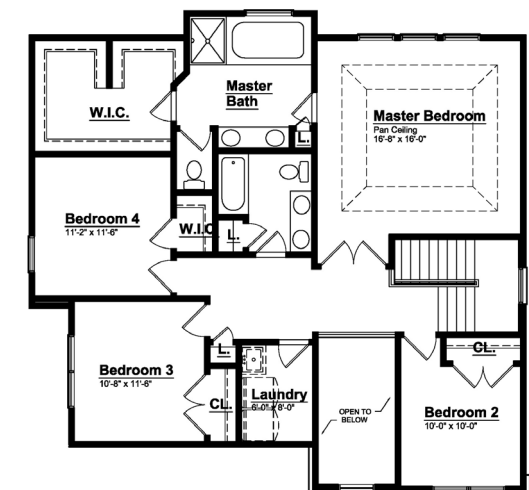


CHARLESTON PARK

First Floor



Second Floor



THE BARTELLE - Colonial

234 SINGH BLVD. SOUTH LYON, MI | 2,685 SF | HOMESITE #75

INCLUDED FEATURES:

- ◆ 3 Car Courtyard Garage
- ◆ 4 Bedroom, 2.5 Bath
- ◆ 42" Maple Kitchen Countertops
- ◆ Quartz Kitchen Countertops
- ◆ Granite Countertops Throughout
- ◆ Stainless Steel Appliances
- ◆ Two Story Foyer
- ◆ Tremco Waterproofing System
- ◆ 10 yr. Basement Warranty
- ◆ 12 Month Builder Warranty
- ◆ Stained Railing & Painted Spindles
- ◆ Second Floor Laundry Room
- ◆ 9' First Floor Ceilings
- ◆ Social Island Configuration
- ◆ Alarm System
- ◆ Hardwood Floors in Common Areas
- ◆ Desk Adjacent to Nook
- ◆ 8' Tall Carriage Style Garage Doors
- ◆ Bench with Storage Cubbies

FOR MORE INFORMATION PLEASE CONTACT:



JYOTI BANIPAL
SALES MANAGER



Jyoti.Banipal@Singhmail.com



248.516.9934



115 Singh BLVD. South Lyon, MI



Mon, Tues, Fri: Noon - 5p.m.
Sat - Sun: Noon - 6p.m.