

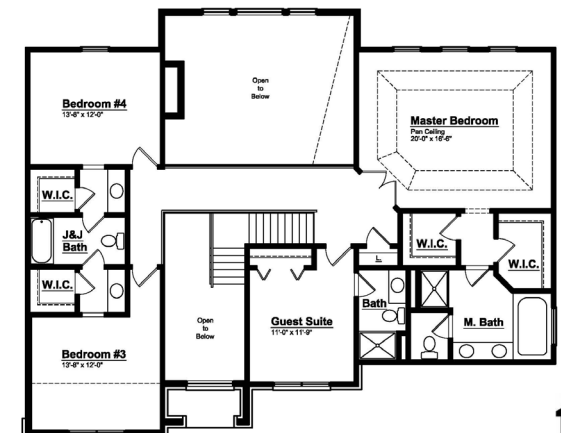


WESTCHESTER

First Floor



Second Floor



THE HELMSLEY - Colonial

6815 PORTSMAN CT. CANTON, MI | 3,430 SF | HOMESITE #15

INCLUDED FEATURES:

- ◆ Stainless Steel Appliances
- ◆ Stained Railing & Painted Spindles
- ◆ 9' First Floor Ceilings
- ◆ 5" Hardwood Floors
- ◆ Two Story Foyer & Family Room
- ◆ 8' 10" Basement Height
- ◆ 8' Tall Garage Doors
- ◆ Granite Countertops Throughout
- ◆ 42" Maple Kitchen Cabinets
- ◆ 10 yr. Basement Warranty
- ◆ 12 Month Builder Warranty
- ◆ Tremco Waterproofing System
- ◆ Butler's Pantry with Glass Uppers
- ◆ Jack and Jill Bathroom Layout
- ◆ Guest Suite with Full Bathroom

FOR MORE INFORMATION PLEASE CONTACT:

 **FE MYLES**
SALES MANAGER

 Fe.Myles@singhmail.com

 248.755.5702

 49476 Annandale Dr. Canton, MI

 Mon, Tues, Fri: Noon - 5p.m.
Sat - Sun: Noon - 6p.m.