

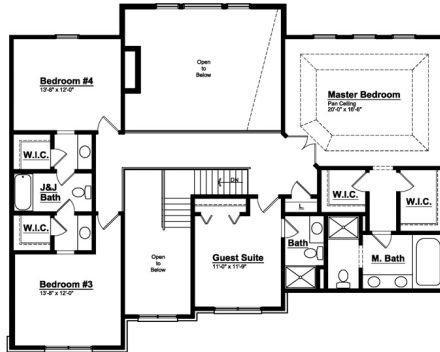
IMMEDIATE OCCUPANCY

6735 PORTSMAN COURT
CANTON, MICHIGAN, 48187

THE "HELMSLEY"

COLONIAL | 3,430 SQ. FT.

HOMESITE 13



- 42" MAPLE KITCHEN CABINETS
- STAINLESS STEEL APPLIANCES
- 10 YR. BASEMENT WARRANTY
- 12 MONTH BUILDER WARRANTY
- ALARM SYSTEM & 1YR. FREE MONITORING

- BUTLER'S PANTRY
- RAILING & SPINDLES
- JACK & JILL BATHROOM
- PRINCESS SUITE
- 9' FIRST FLOOR CEILINGS
- 4 BEDROOM, 3.5 BATH
- 3-PIECE PLUMBING IN BASEMENT
- 3-CAR SIDE ENTRY GARAGE
- TWO STORY FOYER & FAMILY ROOM
- 8' 10" BASEMENT HEIGHT
- 8' TALL GARAGE DOORS
- GRANITE COUNTERTOPS
- TWO - ZONE DAMPER SYSTEM

Sales Manager | Jackie Ounanian | Jounanian@Singhmail.com | 248.755.5702

50148 Baychester Blvd. | Canton, MI 48187 | Mon, Tues, Fri: Noon-5pm Sat-Sun: Noon-6pm

