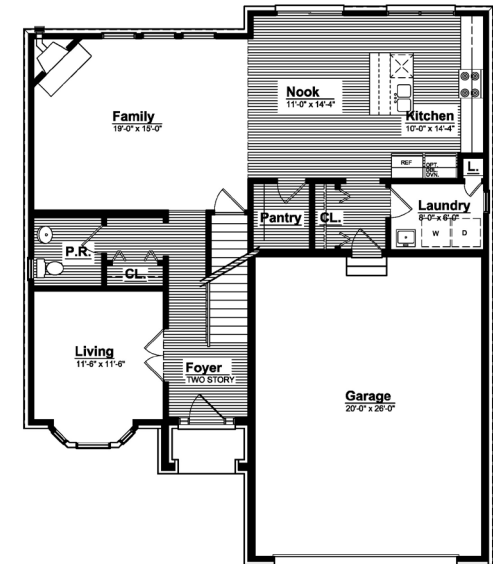


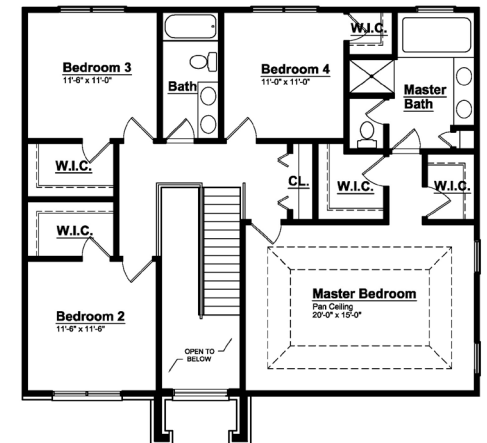


## CHARLESTON PARK

First Floor



Second Floor



### THE ADDISON - Colonial


232 CUYAHOGA CT. SOUTH LYON, MI | 2,353 SF | HOMESITE #34


#### INCLUDED FEATURES:

- ◆ Social Island Configuration
- ◆ Alarm System & 1 yr. Free Monitoring
- ◆ Walk in Kitchen Pantry
- ◆ 2 ft. Nook Extension
- ◆ Stainless Steel Appliances
- ◆ 42" Kitchen Cabinets
- ◆ Quartz Kitchen Countertops
- ◆ Granite Countertops throughout
- ◆ Stained Railing & Painted Spindles
- ◆ Hardwood Floors in Common Areas
- ◆ 9' First Floor Ceiling Height
- ◆ Two Story Foyer
- ◆ 8' Tall Carriage Style Garage Door
- ◆ 6 ft. Garage Extension
- ◆ 12 Month Builder Warranty
- ◆ 10 yr. Basement Warranty
- ◆ Tremco Waterproofing System


#### FOR MORE INFORMATION PLEASE CONTACT:

 **JACKIE OUNANIAN**  
SALES MANAGER

 Jounanian@singhmail.com

 248.240.8110

 115 Singh BLVD. South Lyon, MI

 Mon, Tues, Fri: Noon – 5p.m.  
Sat – Sun: Noon – 6p.m.